

Product Types

Wound core



- » Shaped to minimize line overlap
- » Excellent magnetic properties
- » Grain oriented electrical steel

Wound core with partial molding



- » Eliminates conductive burrs
- » Dimensional precision
- » Patented technology
- » Highly precise positioning
- » Locking structure possible
- » Better magnetic properties

Monolithically molded core



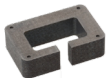
- » We offer mold cores made by our long-standing expertise of core manufacturing
- » High quality assured by integrated production

Ultrasonically welded casing core



- » Ultrasonic welding eliminates performance degradation
- » High quality assured by integrated production

Press laminated core (stacking core)



- » Optimized annealing
- » Outstanding dimensional precision
- » Non-oriented electrical steel

Find out more



Contact us

mobility@nagase.eu

Current Sensor



Industry proven sensor cores
with unique design reliable for
EV applications

NAGASE (EUROPA) GmbH

Werdener Strasse 4
40227 Düsseldorf
Germany

Tel: 0049 (0)211 86620 0
E-mail: mobility@nagase.eu

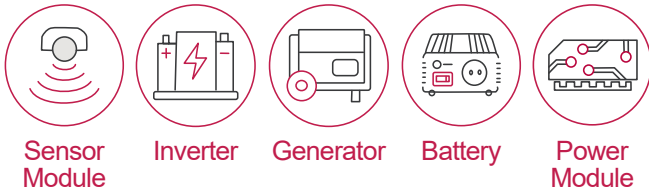
 **NAGASE**



Current Sensor Core

Current sensor plays a very important role as a heart component for drive control in EV to keep your vehicle safe and secure. Our current sensor is a sensor core type which offers highly accurate, safe, industry-proven solutions that can help lead your EV applications more reliable.

Applications

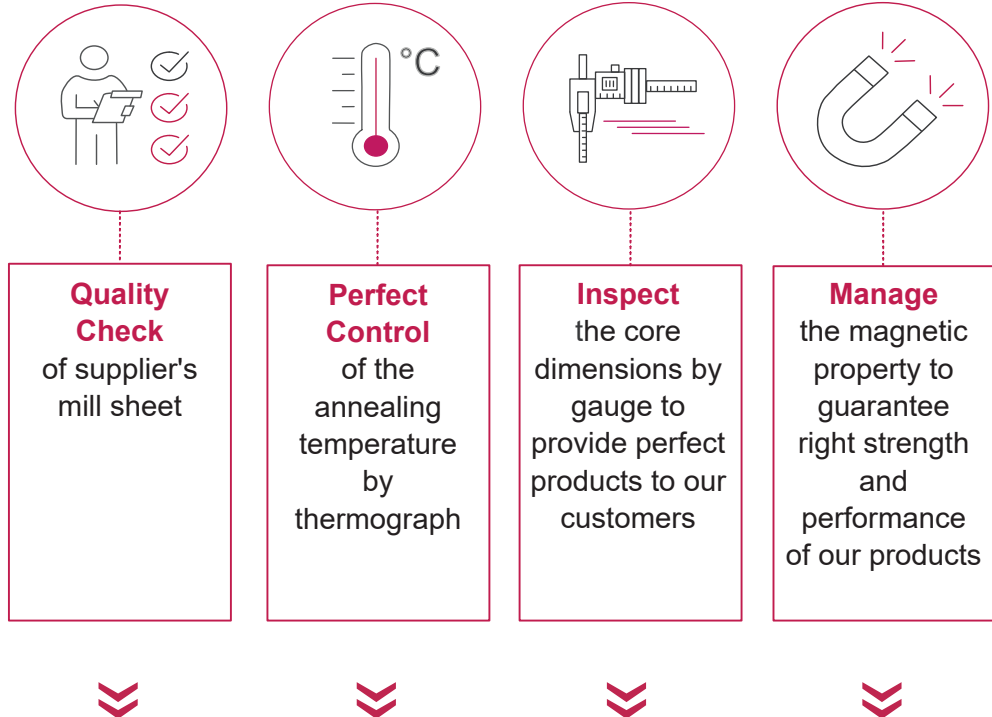


Sales History

- » European OEM
- » Japanese OEM
- » U.S. OEM
- » Chinese OEM

Quality Control - We control quality one step further

Not only guarantee the parts, we also guarantee magnetic performance.



Track record of no claim from customers!

